

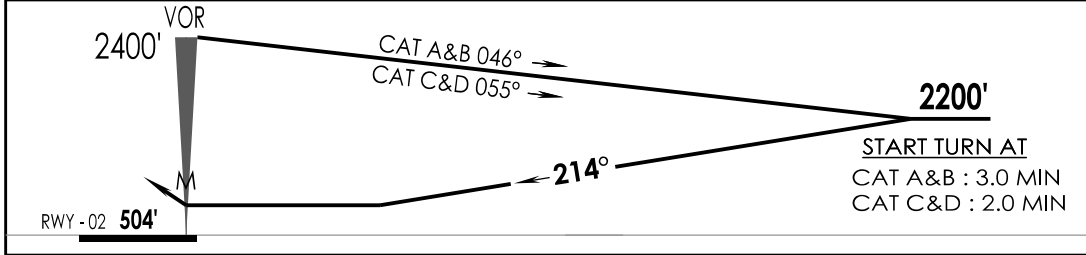
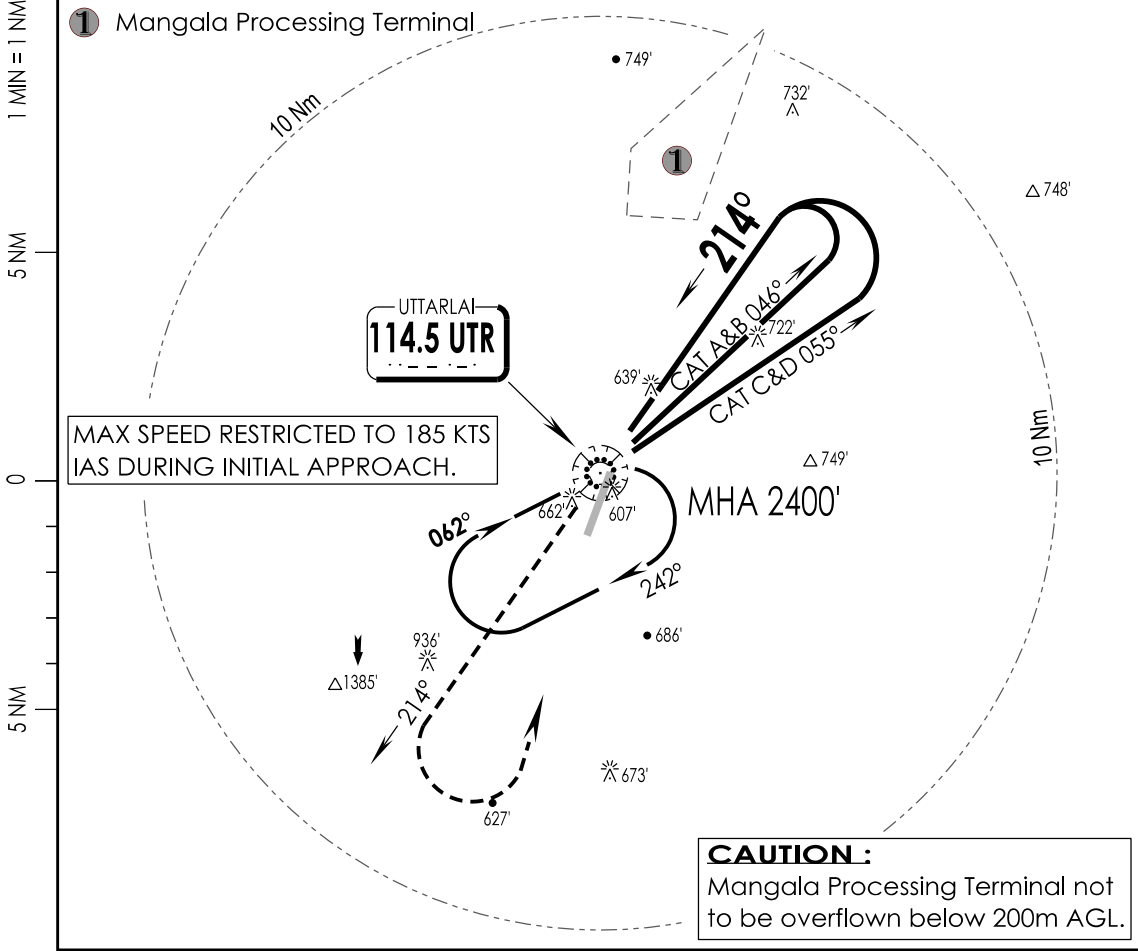
(2-2)

VIUT
UTTARLAI

IAF
Eff 11 MAR 23

UTTARLAI, INDIA
VOR Y RWY 20

UTTARLAI Tower 123.2, VC, UC		UTTARLAI Approach 123.2, VC, UC		ATIS 114.5	3500'
VOR UTR 114.5	FINAL Apch Crs 214°	MDA (H) 1170' (665')		Apt Elev 505'	
				RWY 504'	
MISSED APCH: Climb STRAIGHT ahead to 1600', then climbing Turn Left to join VOR hold at 2400' or as directed by ATC.					
Alt Set: hPa		Rwy Elev: 17 hPa	Trans level: By ATC	Trans alt: 4000'	MSA UTR VOR



MAPt AT VOR		↑ 1600'	2400' ↙
STRAIGHT-IN LANDING RWY 20		CIRCLE - TO - LAND	
non-CDFA			
MDA(H)			
FULL		Max Kts	MDA (H) VIS
A	RVR 2600m	100	1170' (665') 3300m
B		135	
C	RVR 2800m	180	1330' (825') 3800m
D		205	

LIGHTING : CAT-II (20), CL15M(02/20), HIRL 60 M (02/20), TL (02/20), HIALS (20), PAPI (02L/20R), SALS (02)

CHANGES : ALL TRACKS DUE MAG VAR IPDC, DTE OF OPS (T & H)